

## MULTI-INTERFACE MODULE

### DESCRIPTION

The Fike Multi-Interface Module (MIM), P/N 10-2583, is used with a Cheetah Xi® or CyberCat® control panel to facilitate any one of the following interface functions:

- Gateway interface between newer Cheetah Xi and CyberCat panels to original Cheetah panels. This connection facilitates network communication and command and control between panels. Allows communication of system event/state information (i.e., Process, Supervisory, Trouble, Disable, Pre-Alarm 1, Pre-Alarm 2 and Alarm) for zones 1-100 across the gateway (bi-directional).
- Connects either a serial (Keltron 90 series) or parallel (IEEE 1284 standard) printer to a compatible control panel to print real-time logs of system events and event histories. For applications that require a UL listing, the Keltron printer must be used.
- Gateway interface between Cheetah Xi and CyberCat panels and PC graphic (panel firmware V4.20 or higher). As system events occur, they are routed to the PC graphic and are annunciated on the PC display. Events can be displayed either in a tabular format or on building plans that indicate the precise location of the event. Annunciation method depends on the monitoring software installed on the PC graphic at the time of purchase. The MIM allows panel command and control functions (i.e., Reset, Silence, Acknowledge, and Drill) to be initiated from the PC graphic station.

*Note: The MIM can interface to a parallel printer and provide gateway interface functions at the same time. All other connection options are standalone use only.*

The MIM communicates with the Cheetah Xi and CyberCat panels via a two-wire RS485 serial connection to the panel's peripheral bus (P6). 24 Vdc power for the MIM can be provided by the host control panel or auxiliary power supply when available panel power is exceeded.

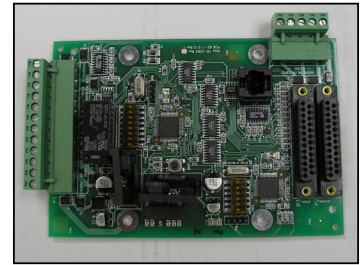
The MIM can be mounted inside the control panel enclosure or in a separate enclosure (P/N 10-069). When installed in the FACP enclosure, the MIM occupies the same location normally used by the secondary power transformer. When installed in the MIM enclosure, direct access for printer cable connection is provided on the assembly faceplate. All other interface connections to the MIM must be routed into the MIM enclosure using the knock-outs provided in the back-box.

### FEATURES

- Can be located up to 4,000 ft. (1219 m) from the panel in separate enclosure.
- Communicates with host control panel via RS485 serial bus connection.
- LEDs provide indication of module status and communication.
- Connects to remote printer using standard DB-25 cable.
- Gateway operation passes information between older Cheetah panels and newer Cheetah Xi and CyberCat panels.
- Printer troubles indicated at control panel.
- Transfers command and control functions from PC Graphic to host control panel.

### SPECIFICATIONS

|   |   |
|---|---|
| Operating Voltage:  | 24 VDC regulated  |
| MIM Current (Alarm and Standby):  | 200 mA  |
| Keltron Printer Current:  | 60 mA (standby) and 1 A (during printing)                     |
| Operating Temperature:  | 32°F to 120°F (0°C to 49°C)                                   |
| Relative Humidity:  | 93%, non-condensing   |
| Maximum wiring distance from panel:                                       | 4,000 ft. (1219 m)  |
| Connections to control panel are power-limited and supervised.            |   |
| 100Ω termination resistor if last device on RS485 peripheral bus circuit. |   |
| MIM Dimensions:   | 5.54" (14 cm) wide x 3.77" (9.6 cm) wide x 1.5" (3.8 cm) deep |



**Multi-Interface Module**

### APPROVALS

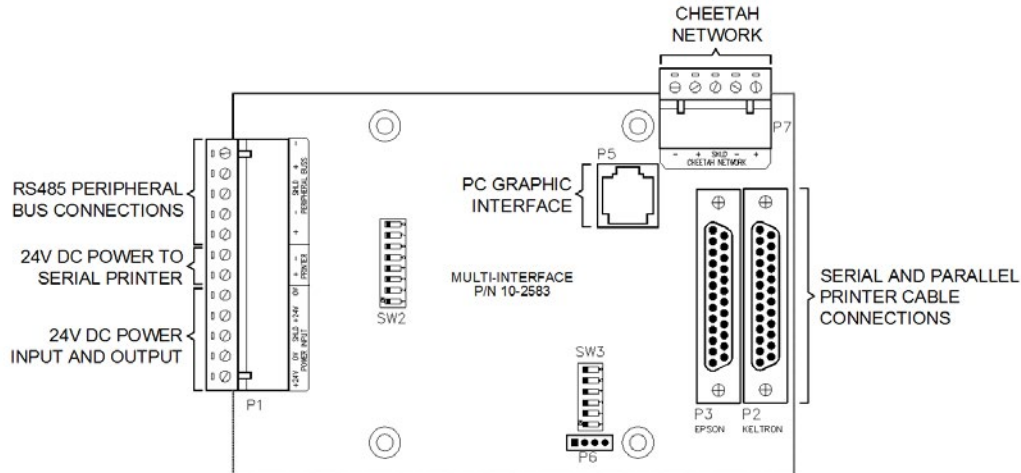
- UL - S3217
- FM
- CSFM - 7165-0900:0149 (Cheetah Xi)  
7165-0900:0137 (CyberCat)
- COA - 6601, 6602, 6603 & 6604



## ORDERING INFORMATION

| Fike P/N | Description   |
|----------|---|
| 10-069   | Multi-Interface Module (MIM) assembly, includes enclosure |
| 10-2583  | Multi-Interface Module (MIM), include in 10-069           |
| 10-2616  | Keltron 90 Series (VS4095/5) Serial Printer, UL listed    |
| 10-2617  | Red Keltron Printer Enclosure (VS ENCREDD)                |
| 10-2618  | Gray Keltron Printer Enclosure (VS ENCGRY)                |
| 10-2619  | Epson FX-890 Printer                                      |
| 10-1874A | Serial Communication Cable, 14 ft. (4.28 m) long          |

## TERMINAL ASSIGNMENTS



## MOUNTING DIMENSIONS

