



DESCRIPTION

The One AMP, Remote Audio enclosure (P/N 10-2797) is designed to house a single voice evacuation system amplifier. The enclosure allows the voice evacuation system amplifier to be strategically located near the area it serves, thus reducing the wire length of the speaker circuits.

The enclosure is made of 18 gauge steel with a baked on enamel finish (red or black) and weighs approximately 14 lbs. (6.4 kg) empty. The enclosure is designed so that it can be surface or flush mounted to the wall. Numerous conduit knockouts are provided on all four sides of the enclosure to allow easy access to the cabinet during system installation. The removable exterior door is hinged on the left side of the back-box and is equipped with a key-lock to prevent unauthorized access to system components.

ENCLOSURE CAPACITY

Threaded press-studs are supplied in the enclosure back-box for easy installation of the following electronic components (supplied with the enclosure):

- A. Amplifier Card, P/N 10-2726 (qty. 1)
- B. Audio Transformer (qty. 1)
- C. AC Power Transformer (qty. 1)
- D. Two 12 AH batteries (sold separately)

See Exhibit 2 for component layout within the enclosure.

The following parts are supplied with the enclosure for mounting of the electronic components:

- 02-12025 Enclosure Key (qty. 2)
- 02-12014 Hardware Kit
 - 4153-142 Lock Washer, #6 (qty. 2)
 - 02-1361 6-32 Hex Nut (qty. 2)
 - 02-4992 Ground Wire (qty. 1)
 - 02-4035 Nut and star washer kit (contains 20 nuts and washers)



Exhibit 1: One AMP, Remote Audio Enclosure

MOUNTING LOCATION

The following guidelines shall be adhered to when selecting the mounting location for the remote audio enclosure:

1. Mount the enclosure on a surface that is vibration free, clean, and dry.
2. Mount the enclosure in an area that is free from sources of electromagnetic interference and radio frequency interference; as these are types of problems that could adversely effect the successful operation and useful life of the electronic equipment housed in the enclosure.
3. Mount the enclosure in an environment with a nominal room temperature of 15°-27°C (60° - 80°F), with a relative humidity of 85 percent.
4. Allow sufficient clearance around enclosure to allow door to swing freely.
5. Mount enclosure at a height that allows easy access to system electronic components for maintenance and service.

INSTALLATION

1. Determine the quantity and size of conduit to be attached to the enclosure and remove appropriate knockouts. Do not use conduit knockouts located in the bottom of the enclosure if installing batteries.

Note: Fire Alarm System wiring is classified as either power-limited or non-power-limited per NEC Article 760. All power-limited wiring must be separated from all non-power-limited wiring by a minimum distance of 1/4" (6 mm). Refer to documentation provided with each electrical component for designation of power-limited versus non-power-limited circuits.

2. Mount the enclosure at the selected location. See Exhibit 3 for enclosure dimensions. The outer door can be removed to make installation of the back box easier. Remove the outer door by unscrewing the two hinge screws.

Surface Mounting

Utilize the four tear-drop openings in the back of the back box to secure it to the mounting surface with suitable anchors.

Flush Mounting

Cut an opening in the wall to fit the back box dimensions and secure the box in place utilizing the through holes provided on the sides of the back box.

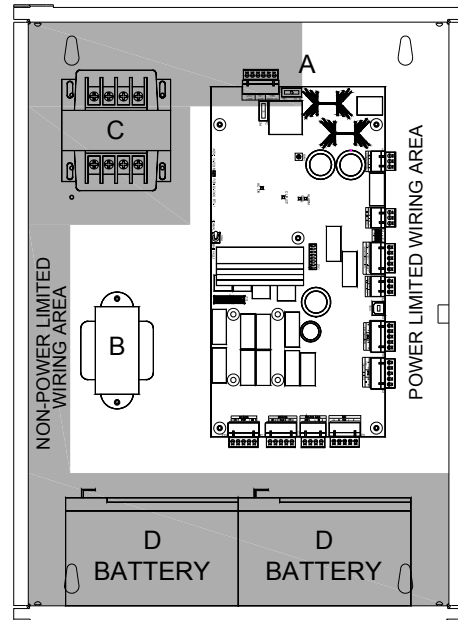


Exhibit 2: Enclosure Layout

CAUTION

The enclosure is NOT fire rated. Do not mount on or in a fire rated wall unless wall is properly framed to maintain specified fire rating.

3. Reinstall the enclosure door and connect the door grounding wire using hardware provided (See Exhibit 4). Adjust routing of grounding wire if necessary to allow full movement of enclosure door.
4. After enclosure is cleaned and free from all construction dust; install electronic components into the enclosure using the installation instructions supplied with each component.

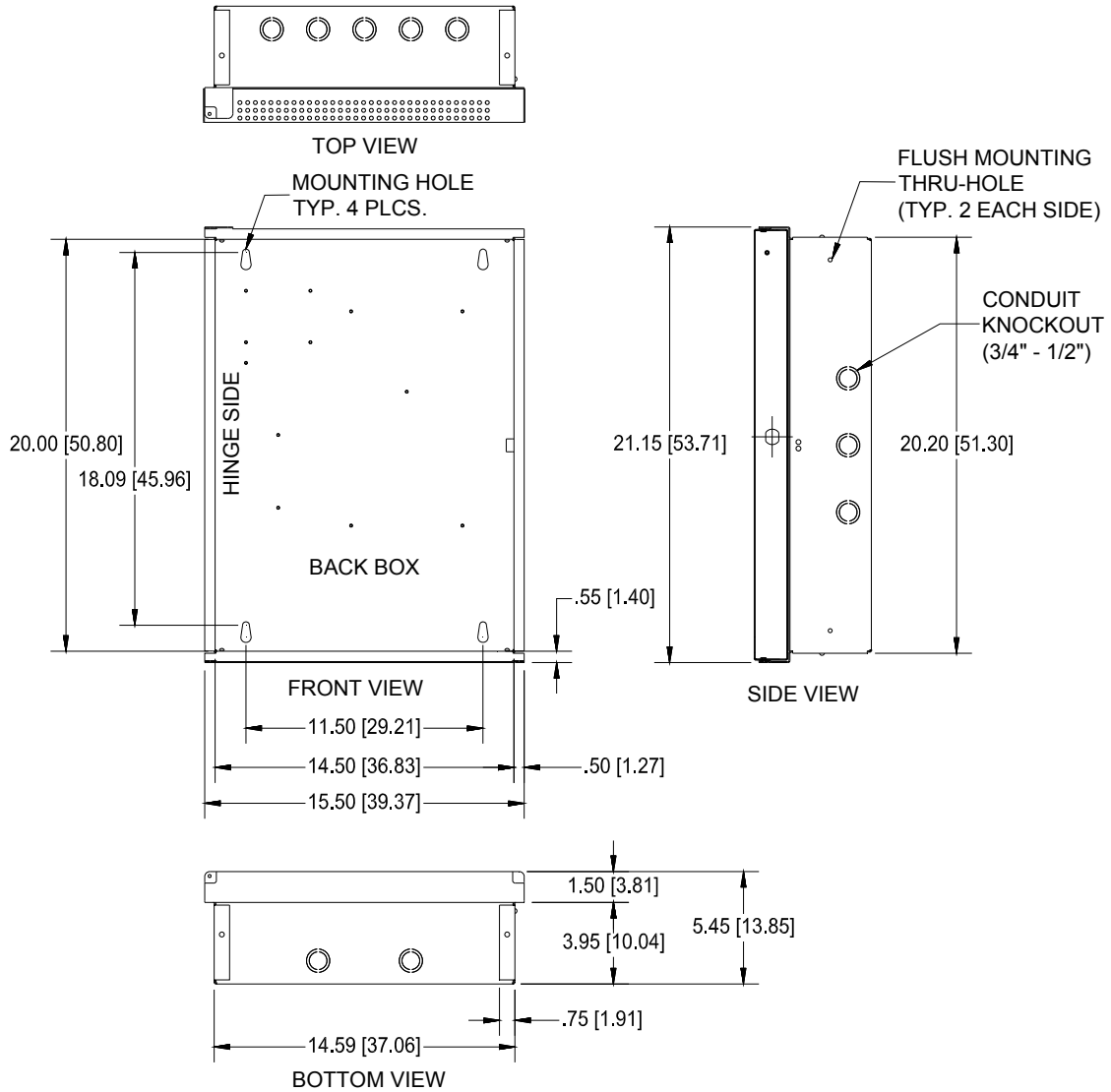


Exhibit 3: Enclosure Dimensions (inches/cm)

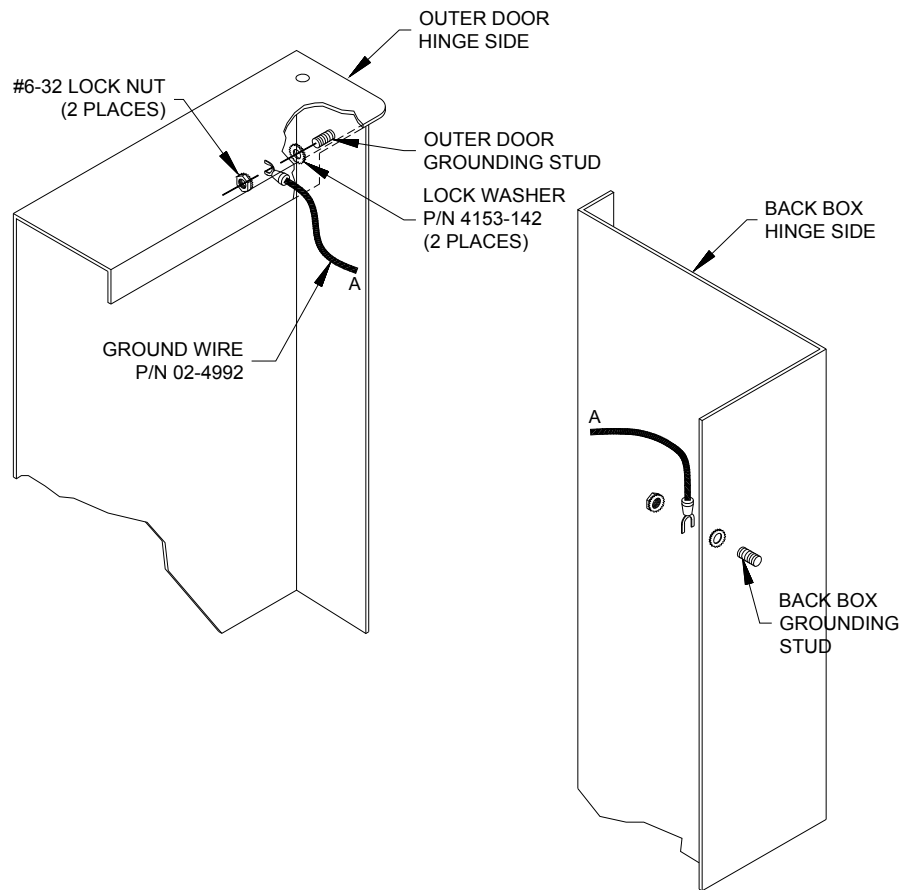


Exhibit 4: Ground Wire installation