

## REMOTE AUDIO ENCLOSURE - 1 AMP

### DESCRIPTION

The Single AMP Remote Audio enclosure is designed to house a single voice evacuation system amplifier. The enclosure allows the voice evacuation system amplifier to be strategically located near the area it serves, thus reducing the wire length of the speaker circuits.

The enclosure is made of 18 gauge steel with a baked on enamel red finish and weighs approximately 14 lbs. (6.4 kg) empty. The enclosure is designed so that it can be surface or flush mounted to the wall. Numerous conduit knockouts are provided on all four sides of the enclosure to allow easy access to the cabinet during system installation. The removable exterior door is hinged on the left side of the back-box and is equipped with a key-lock to prevent unauthorized access to system components.

### Enclosure Capacity

The enclosure is designed to house the following components:

- Amplifier Card, P/N 10-2726 (qty. 1)
- Audio Transformer (qty. 1)
- AC Power Transformer (qty. 1)
- Two 12 AH batteries (sold separately)

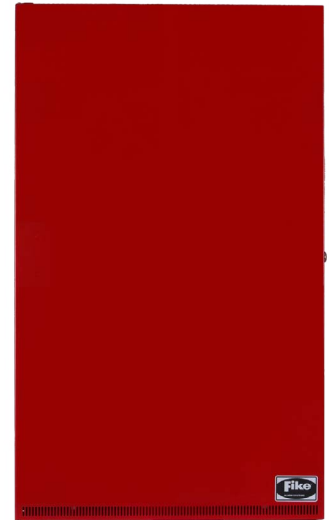
Note 1: Components are shipped separately and must be installed in the field.

Note 2: The following mounting hardware is supplied with the enclosure for installation of electronic components:

- 02-12014 - Hardware Kit
- 02-12025 - Key (qty. 1)
- 4153-142 - Lock Washer, #6 (qty. 2)
- 02-1361 - 6-32 Hex Nut (qty. 2)
- 02-4992 - Ground Wire (qty. 1)
- 02-4035 - Nut and star washer kit (contains 20 nuts and washers)

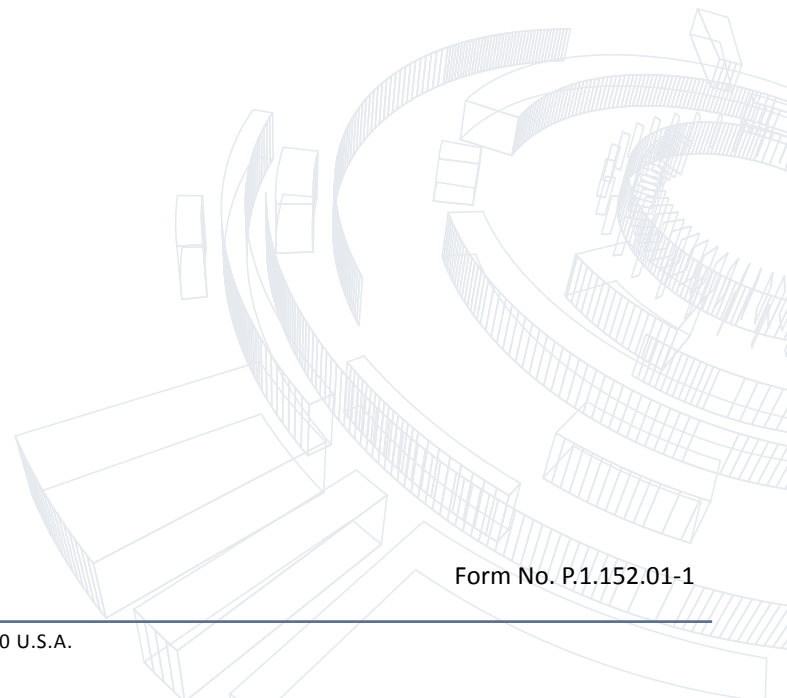
### ORDERING INFORMATION

Fike P/N	Description
10-2797-1-0-01-0-1-01	Single Amp Enclosure



### APPROVALS:

- UL - S3217
- FM - 3045087
- CSFM – 7165-0900:0137
- City of New York - #6120



Form No. P.1.152.01-1

**ENCLOSURE LAYOUT/DIMENSIONS**

