



## DESCRIPTION

The 50 point enclosure (See Exhibit 1) is made of 18 gauge steel with a baked on enamel finish (red or black). It is designed so that it can be surface or flush mounted. Numerous conduit knockouts are provided on all four sides of the enclosure to facilitate easy wiring access into the enclosure. The knockouts allow connection of either 1/2" or 3/4" conduit. The removable exterior door is hinged on the left side of the back-box and is equipped with a key-lock to prevent unauthorized access to system components.

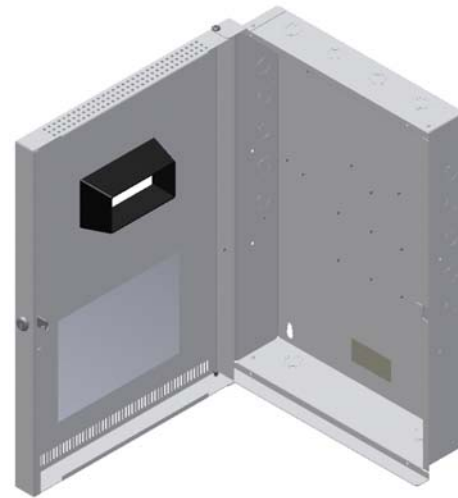
Threaded press-studs are supplied in enclosure back-box for easy installation of the following system components (sold separately):

- A. Cheetah Xi™ 50 or CyberCat™ 50 Controller (qty. 1)
- B. AC Power Transformer (qty. 1)
- C. Bosch FPT-DACT-LC, P/N 10-2528
- D. Class A Peripheral Bus Card, P/N 10-2792\*
- E. Multi-Interface Module (MIM), P/N 10-2583\*
- F. Ethernet Module, P/N 10-2627\*
- G. Two 18 AH batteries (maximum)

\* MIM, Ethernet module and Class A Peripheral Bus card share a common mounting location. Only one component can be installed at a time.

See Exhibit 2 for component layout within the enclosure.

The enclosure can be equipped with an optional dead-front panel that is designed to isolate the operator from the internal electronics and wiring; yet allows access to system display and control buttons. The dead-front panel can be ordered as part of the base system or separately for retrofit applications.



**Exhibit 1: Enclosure**  
(shown without the dead-front panel)

## ENCLOSURE OPTIONS

### Standard Enclosure w/o Dead-front Panel

Part Numbers: 10-2621-c (CyberCat™ 50)  
10-2623-c (Cheetah™ Xi 50)  
Weight: 16 lbs. (7.3 kg) empty  
(door and back box)

### Standard Enclosure w/ Dead-front Panel

Part Numbers: 10-2621-c-d (CyberCat™ 50)  
10-2623-c-d (Cheetah™ Xi 50)  
Weight: 21 lbs. (9.5 kg)  
(door, dead-front, and back box)

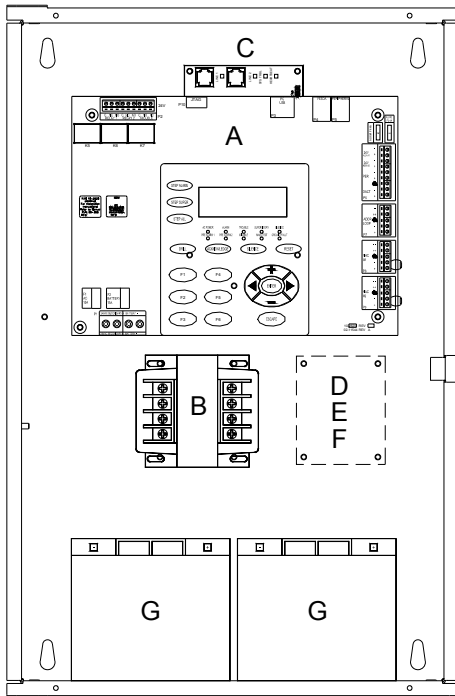
### Dead-front Panel

Part Number: 10-2628-c (CyberCat™ or Cheetah™ Xi)  
Weight: 5 lbs. (2.3 kg)

## SUPPLIED MOUNTING HARDWARE

The following mounting hardware is supplied with the enclosure for future installation of the electronic components. *Store hardware inside the enclosure after enclosure installation.*

02-12032	Standoff Kit
02-4133	M/F Standoff, 2.5" (qty. 4)
02-11834	F/F Standoff, 2.5" (qty. 1)
02-11833	F/F Standoff, .625" (qty. 4)
02-2196	6-32 x .25 Pan Head Machine Screw (qty. 4)
02-12014	Hardware Kit
4153-142	Lock Washer, #6 (qty. 2)
02-1361	6-32 Hex Nut (qty. 2)
02-4992	Ground Wire (qty. 1)
02-4035	Nut and star washer kit (contains 20 nuts and washers)



**Exhibit 2: Enclosure Layout**

## MOUNTING LOCATION

The following guidelines shall be adhered to when selecting the enclosure mounting location:

1. Mount the enclosure on a surface that is vibration free, clean and dry.
2. Mount the enclosure in an area that is free from sources of electromagnetic interference and radio frequency interference; as these are types of problems that could adversely affect the successful operation and useful life of the electronic equipment housed in the enclosure.
3. Mount the enclosure in an environment with a nominal room temperature of 15°-27°C / 60° - 80°F, with a relative humidity of 85 percent.
4. Allow sufficient clearance around the enclosure to allow the door to swing freely.
5. Mount the enclosure at a height that allows easy access to system electronic components for maintenance and service.

## ENCLOSURE INSTALLATION

1. The enclosure's outer door can be removed to make installation of the back box easier. To remove the outer door, unscrew the hinge screws located at the top and bottom of the enclosure.
2. Determine the quantity and size of conduit to be attached to the enclosure and remove appropriate knockouts. Knockouts provide for attachment of 1/2" or 3/4" conduit. Do not use conduit knockouts located in the bottom of the enclosure if installing batteries.

**Note:** Fire Alarm System wiring is classified as either power-limited or nonpower-limited per NEC Article 760. All power-limited wiring must be separated from all nonpower-limited wiring by a minimum distance of 1/4" (6 mm). Refer to documentation provided with each electrical component for designation of power-limited versus nonpower-limited circuits.

3. Mount the enclosure at the selected location. See Exhibit 3 for enclosure dimensions.

### Surface Mounting

Utilize the four tear-drop openings in the back of the back box to secure it to the mounting surface with suitable anchors.

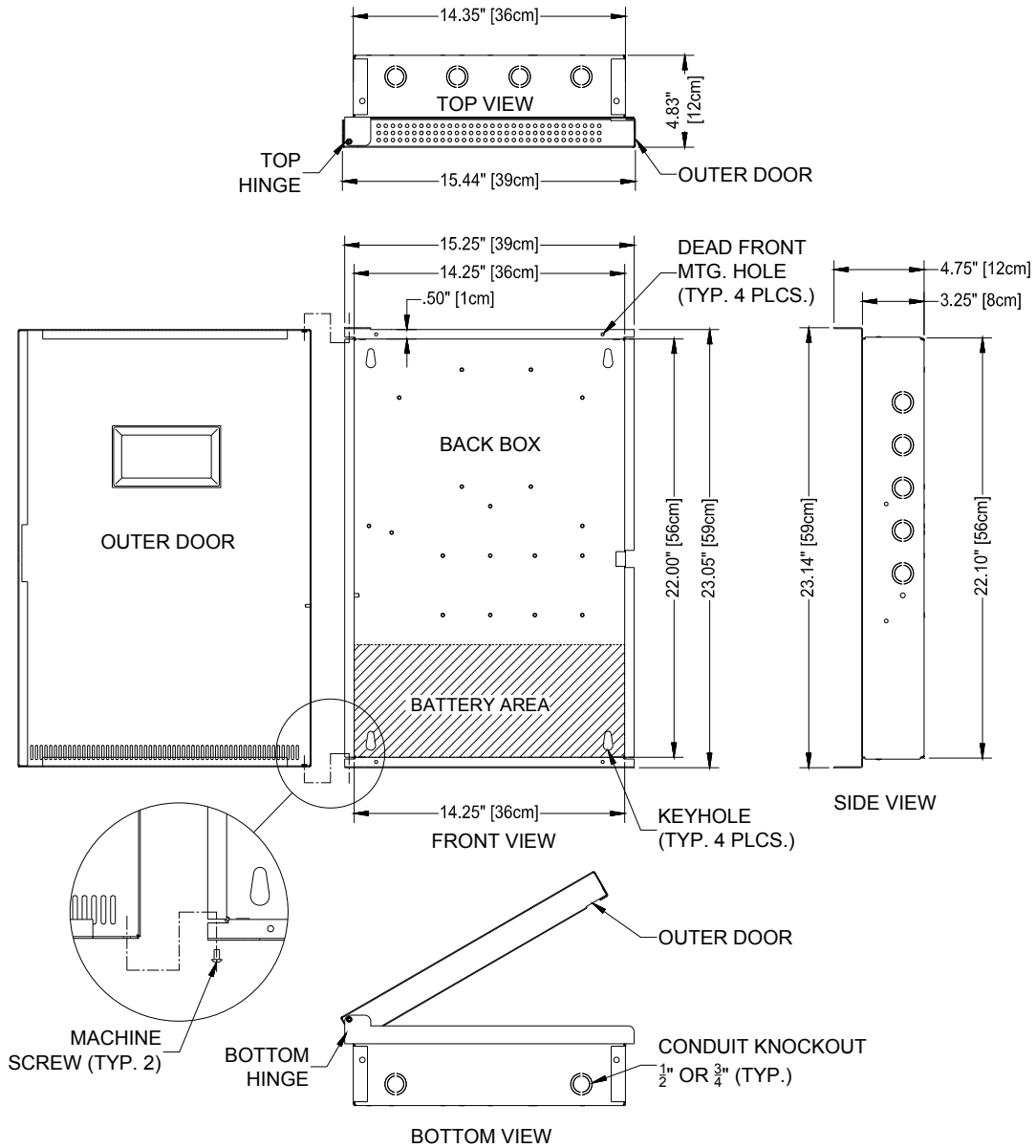
### Flush Mounting

Cut and frame an opening in the wall to fit the back-box dimensions. Secure the box in place utilizing the through holes provided on the sides of the back box.

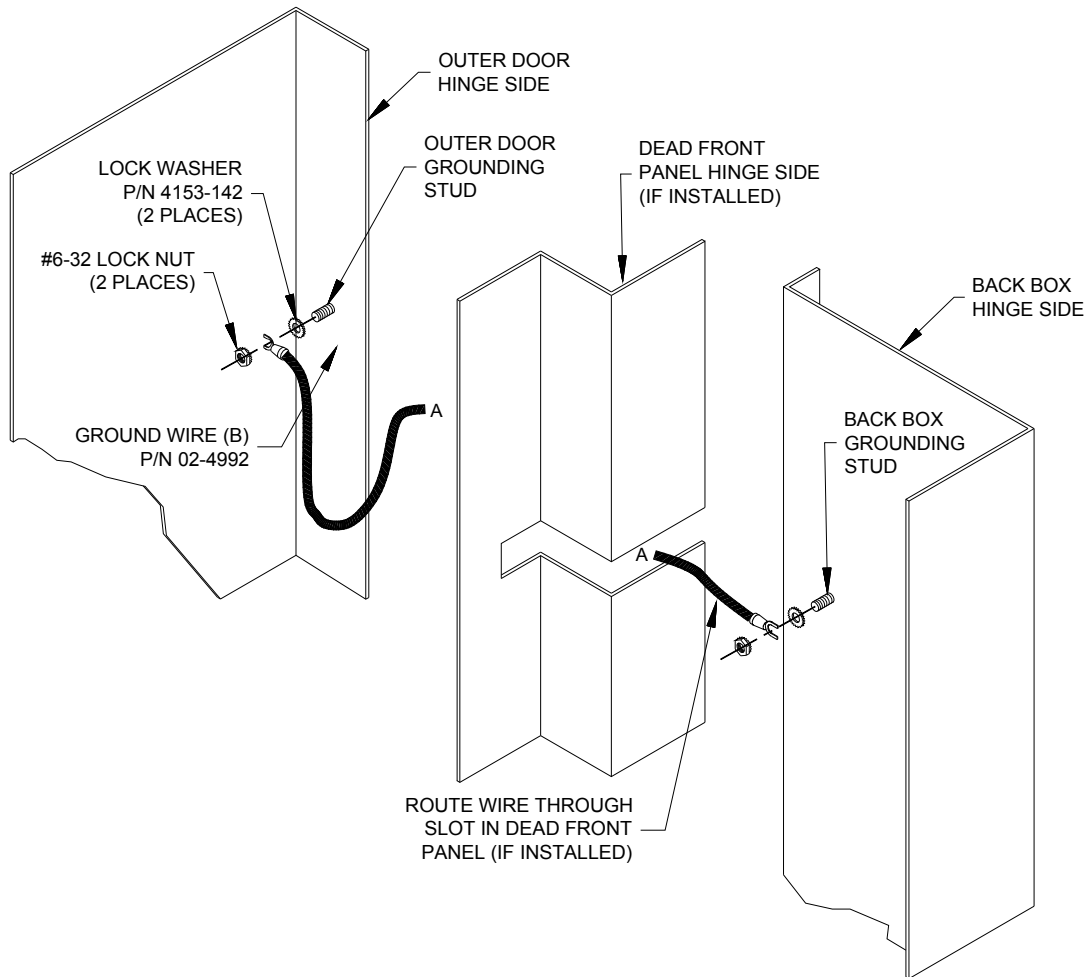
### **CAUTION**

The enclosure is NOT fire rated. Do not mount on or in a fire rated wall unless wall is properly framed to maintain specific fire rating.

4. Reinstall the outer door using existing mounting hardware.
5. Connect the outer door grounding wire, as shown in Exhibit 4, using the hardware provided. Adjust routing of grounding wire as necessary to allow full movement of outer door. Check for continuity between door and back box.
6. If the enclosure was ordered with the optional dead-front panel, refer to the documentation supplied with the panel for installation instructions.



**Exhibit 3: Enclosure Dimensions**



**Exhibit 4: Outer Door Ground Wire Installation**