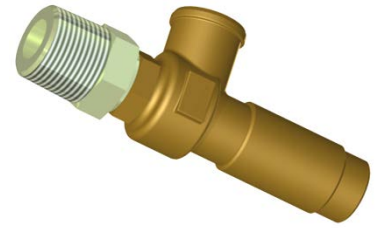


## PROINERT<sup>®2</sup> MANIFOLD RELIEF VALVE ASSEMBLY

### DESCRIPTION

The Manifold Relief Valve Assembly consists of a safety relief valve, sealing washer and reducing adaptor. It is installed in the discharge manifold of systems that protect multiple hazards via the use of selector valves to release the agent pressure when it exceeds the relief valve set pressure of 55.2 bar (800.6 psi). It has a G $\frac{3}{4}$  outlet connection to allow any agent discharged to be piped to atmosphere.



### SPECIFICATION

Item	Description
Part Number	IG71-007
Material	Brass
Set Pressure	55.2 bar (800.6 psi)
Connection Size	G $\frac{3}{4}$ Female Outlet / R1 Male Inlet (ISO 228-1)
Temperature Range	-20° C to +49° C (-4° F to +120° F)
Listings & Approvals	CE Marked

Install Manifold Relief Valve  
Here (See Note)



Piping to Selector Valves /  
Piping Network

### NOTE:

Manifold Relief Valve(p/n IG71-007) must be installed when Selector Valves are used. (must be ordered seperately)

