

EXH Ex-Proof Housing



Features

- Certification Ex d for use in Zone 1 and 2, Group IIC (Gas), and in Zone Ex tb 21 and 22 (Dust)
- Solid anticorodal aluminum construction
- IP66
- 2 holes for cable glands, 3/4" NPT
- Supplied with heater. Sunshield as option.

General

The EXH housings are made of strong Anticorodal aluminum die-cast alloy of AISi Mg EN AB-42000 group. All external components are stove enameled using powder offering an excellent resistance to UV rays, salt-spray, environmental polluting substances.

The cylinder body of the EXHC housing (210mm diameter and 400mm length) is closed on opposite sides by two 12mm thick flanges. The housing is supplied with two holes for 3/4" NPT cable glands. The camera housing is equipped with a heater and optional sunshield.

Ordering

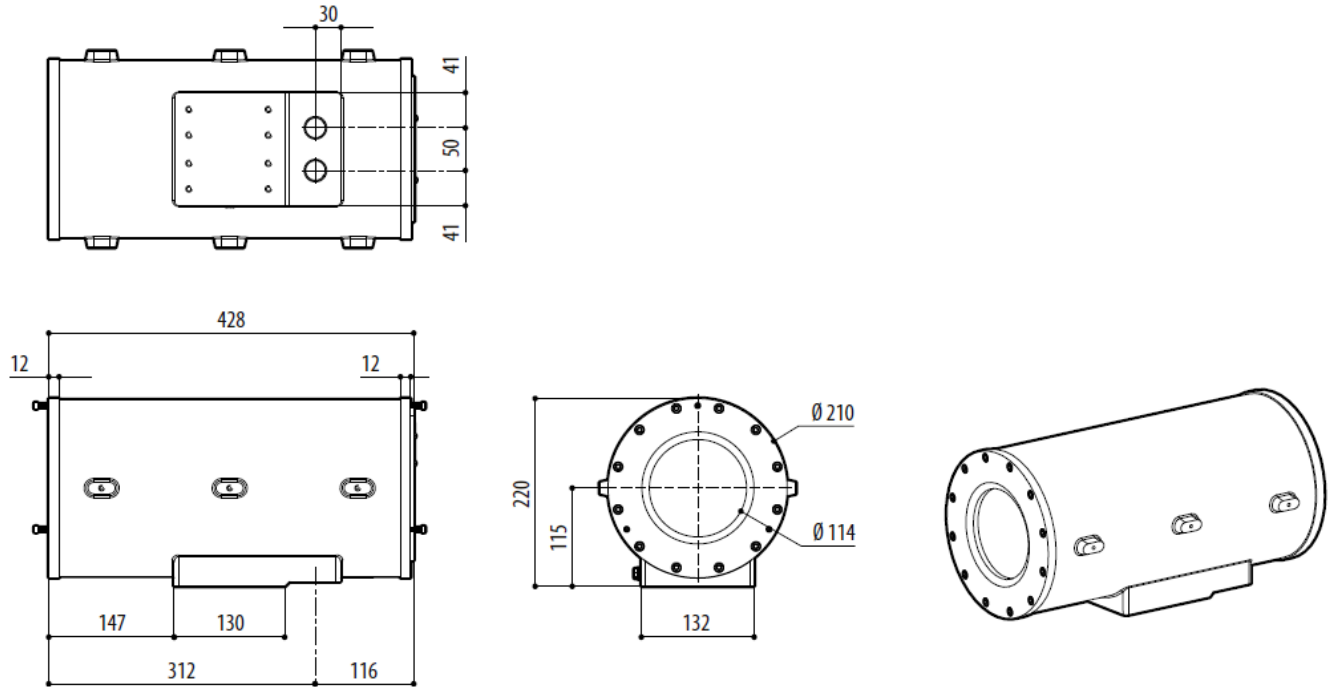
EXHC003R Ex-proof housing with 24Vac heater

Specifications

General
Non-corrosive die-cast aluminum (anticorodal)
Epoxy powder painted with ornage peel effect, RAL7032
Mechanical
2 holes for cable glands, 3/4" NPT
External dimensions: -EXHC Ø 210mmx427.5mm (8.2x16.8in)
Internal dimensions: -EXHC Ø 180x380mm (7x14.9in)
Internal usable area: -EXHC 100x100x280mm (3.9x3.9x11in)
Glass window extra clear: -EXHC Ø 114mm (4.5in)
Unit weight: EXHC 15kg (33lb)
Electrical
Reinforced heater (Ton 15°C±4°C(59°F±7°F), Toff 22°C±3°C(72°F±5°F) -3 resistors in the housing, consumption 60W max
Glass protection device: -24Vac, power consumption 2W max
Devices to install inside the housing -Camera equipped with lens with max total power of 20W -Voltage max. 24Vac or 230Vac -Useful volume for camera/lens: 2800cm ³ -Minimum distance between the walls of the housing and the camer/lens: 12mm
Environment
For installation indoors or outdoors
Operating temperature with heater: -40°C/+50°C (-40°F/+122°F)
Certifications
Electrical safety (CE): EN6236801
Electromagnetic compatibility (CE): EN601000-6-3, EN61000-3-2, EN61000-3-3, EN50130-4, EN55032 (Class B)
RoHS (CE): EN50581
Outdoor installation (CE): EN60950-22, ICE60950-22
IP protection degree (EN/IEC60529): IP66
Certifications – Explosion-Proof Applications
ATEX (EN 60079-0+A11, EN 60079-1, EN 60079-31)
IECEX (IEC 60079-0, IEC 60079-1, IEC 60079-31)
EAC EX (TR CU 012/2011)
KCs (Employment and labor department 2016-54)

This document is only intended to be a guideline and is not applicable to all situations. Information is subject to Fike's full disclaimer at <http://www.fike.com/disclaimer>.

Housing Dimensions (mm)



Accessories

Model/Part Number	Description
EXHS000	Sunshield for EXH series
EXWBJ000	Bracket and ball joint RAL7032 for EXH series
EXBJ000	Only ball joint for EXH RAL7032 housings



EXHS000

Solid anticorrosional aluminum construction
Length: 580mm (22.8in)



EXWBJ000

Solid anticorrosional aluminum construction
Load Rating: 35kg (77lb)
Length: 455mm (17.9in)
Unit weight: 6.6kg (14.5lb)



EXBJ000

Solid anticorrosional aluminum construction
Unit weight: 2.9kg (6.4lb)

This document is only intended to be a guideline and is not applicable to all situations.
Information is subject to Fike's full disclaimer at <http://www.fike.com/disclaimer>.